

PRACTICAL

RUGGED

SMART

LABQUEST
BY BOROSIL®

BE VOCAL ABOUT LOCAL

Vortex

Experience the **Ease of Mixing**

INDUCING

bhRmi 1.0 & bhRmi 2.0



STABLE



SILENT



VERSATILE

Power • Performance • Precision

Multiple Operations, Maximum Convenience.....



Borosil Labquest bhRmi is useful for accelerated mixing of solutions in test tubes, small flasks or centrifugal tubes etc. Sleek and modern bhRmi range vortex mixers are capable of meeting the mixing requirements in bioscience, microbiology-Cell Suspending, molecular biology procedures also Mixing Blending in biochemical, and analytical Laboratories.

bhRmi vortexes most functional unit for a range of applications requiring gentle mixing to high speed vortexing. A simple Vortex Mixer ensures high throughput by mixing of immiscible fluids or difficult suspensions and homogenising them.

Wide range of accessories available - for vortexing - rubber cup, Flat form attachment & Micro Centrifuge Tube Holder Foam attachment for bhRmi 1.0 . Additionally Volumetric Flask (upto 100ml) holder & 96 Well

Plate Holder with special straps are available with bhRmi 2.0

Various interchangeable attachments and inserts allow the bhRmi to be used for different applications. The attachments securely click onto the unit in any position. A special strap ensures easy handling of small Volumetric/Erlenmeyer flasks. The bhRmi is stable even at high speeds, thanks to special feet in a silicon base with ultra high vibration damping.



POWERFUL
VORTEX



VARIABLE
SPEED



STURDY
DESIGN

Select best possible solution.....

Analog model bhRmi 1.0 offers variable speed control, and the Digital Display for bhRmi 2.0 allows input of the exact speed and time to achieve reproducible results. They are built Sturdy to offer greater stability and reliable results.

- Advanced vortex mixer with continuous or touch operating mode at variable speed control
- Mixing speed can be selected from 300 rpm for very gentle mixing to 2800 rpm for vigorous agitation
- Speed Regulation Via Rotary Knob provides Quick acceleration with fine control
- The unique counter-balance system creates maximum vortexing action and optimized safety.
- Optimized built-in safety features against overload and current fluctuations.
- Stable suction device feet, provide vibration dampening and prevent movement during vertexing.
- The new robust dia cast alloy construction ensures the best in class chemical resistance.

ADDITIONALLY

LCD Display for rpm and Timer to Display achieve reproducible results



BHRMI 1.0



BHRMI 2.0

VORTEX MIXER

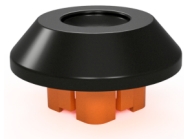


Model	BHRMI 1.0	BHRMI 2.0
Speed	500 to 2800 rpm	300 to 2800 rpm
Orbital diameter	6 mm	
Operational mode	Touch, Stand-by & Continuous mode	
Timer Setting	No	0 -999 min
Display	No	LED with rpm & time
Feet	Four suction cups	
Unit External Dimension (W x D x H)	(132 x 160 x 180) mm	
Power consumption	55 W	56W
Current consumption	0.6 A	
HSN Code	84798200	
Ordering Information	BLFHVMX01000000000	BLFHVMX02000000000

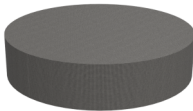
ACCESSORIES BHRMI 1.0 & 2.0

INCLUDED

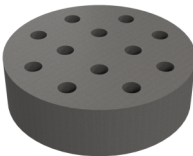
Rubber Cup
BLAHVMX01040000000



Flat Foam
BLAHVMX01050000000



Vial Holder
BLAHVMX01000000001



Foam Holder
BLAHVMX01010000007



OPTIONAL

Accessories for 96 WELL PLATE

Ordering code (Combine) BLAHVMX02060000000

Microplate holder



Well plate locking belt



Accessories for VOLUMETRIC FLASK

Ordering code (Combine) BLA0EVA000FOAM0VMX

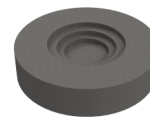
25, 50, 100ml Volumetric Flask Belt



Volumetric Flask Belt Locker



Volumetric flask Base foam



Foam Holder



BOROSIL
BOROSIL LIMITED

1101, Crescenzo, G-Block, Opp. MCA Club,
Bandra Kurla Complex, Bandra (E), Mumbai - 400 051. India
T : +91 22 6740 6300 F : +91 22 6740 6514
E : borosil@borosil.com W : www.borosil.com

Manufactured by :

BOROSIL TECHNOLOGIES LTD.
21-24, Plot No. 8, Indialand Global Industrial Park,
Hinjewadi Phase - 1, Pune - 411 057

LABQUEST
BOROSIL

BOROSIL
TECHNOLOGIES